



REAL
ESTATE

Artillery Mansions, Victoria Street, London SW1H 0HX



- Good sized double bedroom
- Balcony
- Large windows providing excellent natural light
- Prestigious gated development
- Attractive gated courtyard with fountain
- 6th floor
- Bright open-plan reception and dining area
- Lift
- 24/7 concierge
- Excellent transport connection

With well-planned lateral living space, this apartment provides an ideal home or pied-à-terre moments from St James's Park, Victoria and Parliament Square.

The flat is entered via a welcoming hallway, leading to a generous open-plan reception and dining area, perfect for both relaxing and entertaining. Large windows bring in excellent natural light.

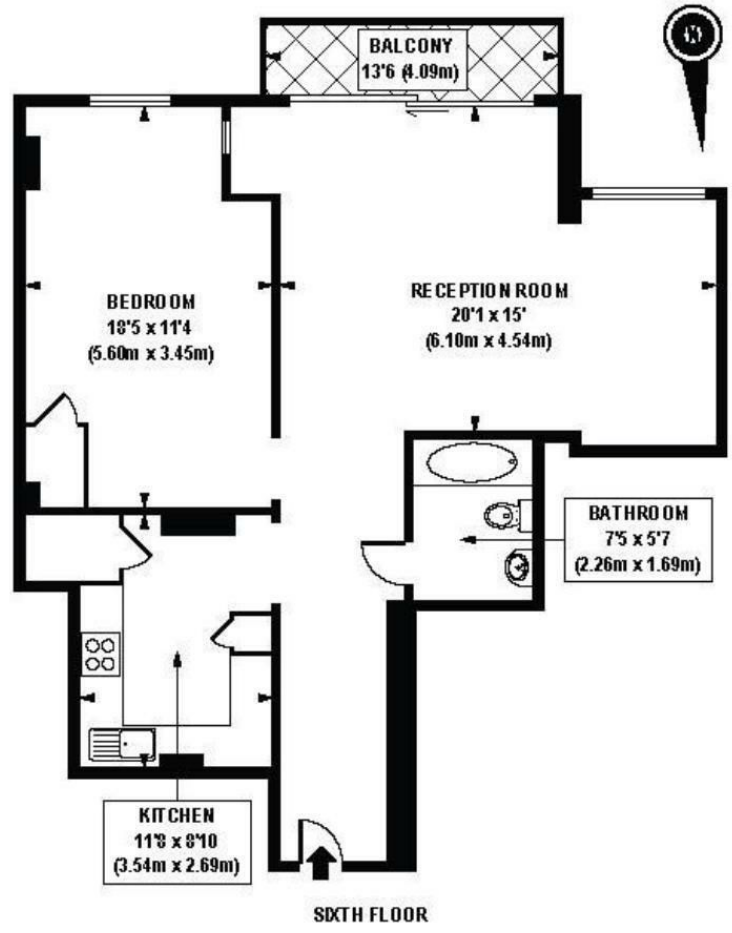
The well-proportioned double bedroom includes built-in wardrobe.

Artillery Mansions is a highly regarded Victorian mansion block known for its impressive gated courtyard with a fountain, providing residents with a tranquil retreat in the

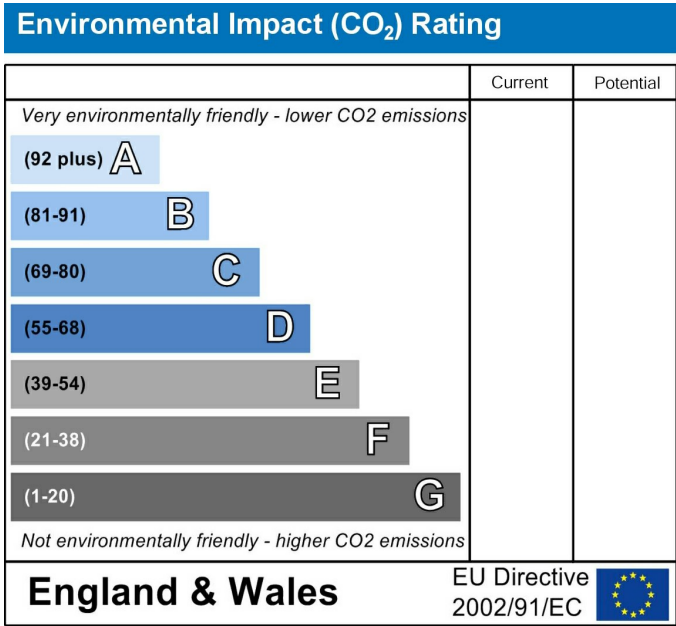
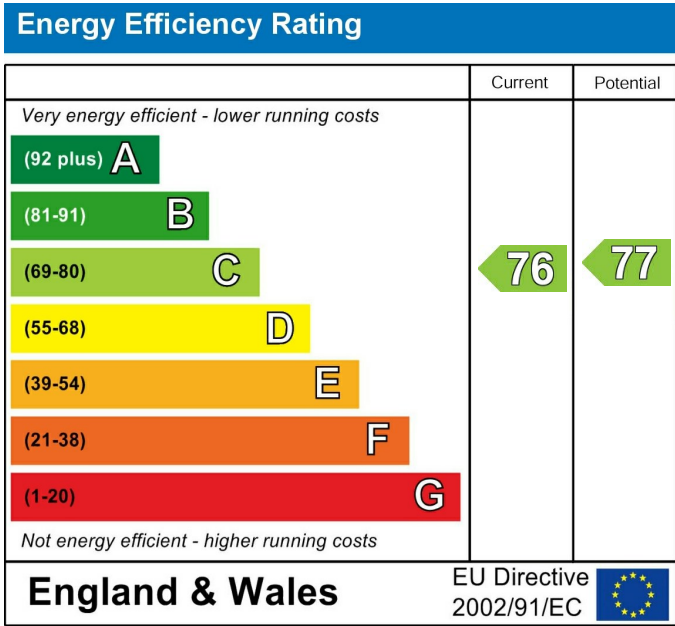
Price £695,000

7 Marylebone Lane, London, W1U 1DB
T: 0203 871 4074 | welcome@azrealestate.eu





APPROX. GROSS INTERNAL FLOOR AREA 752 sq. ft / 69.84 sq. m



Well-presented one-bedroom apartment 752 sq ft situated on the 6th floor (with lift) of the prestigious and gated Artillery Mansions development in Westminster.

These particulars, whilst believed to be accurate are set out as a general outline only for guidance and do not constitute any part of an offer or contract. Intending purchasers should not rely on them as statements of representation of fact, but must satisfy themselves by inspection or otherwise as to their accuracy. No person in this firm's employment has the authority to make or give any representation or warranty in respect of the property.

7 Marylebone Lane, London, W1U 1DB
 T: 0203 871 4074 | welcome@azrealestate.eu